

1/0 ACSR



CR 2301

Protective Device is OCR

2 TPX



3

4

Easement

Location is 302' South of CR 2304

Will changeout 35' 1980 pole at no cost.

1

1/0 ACSR

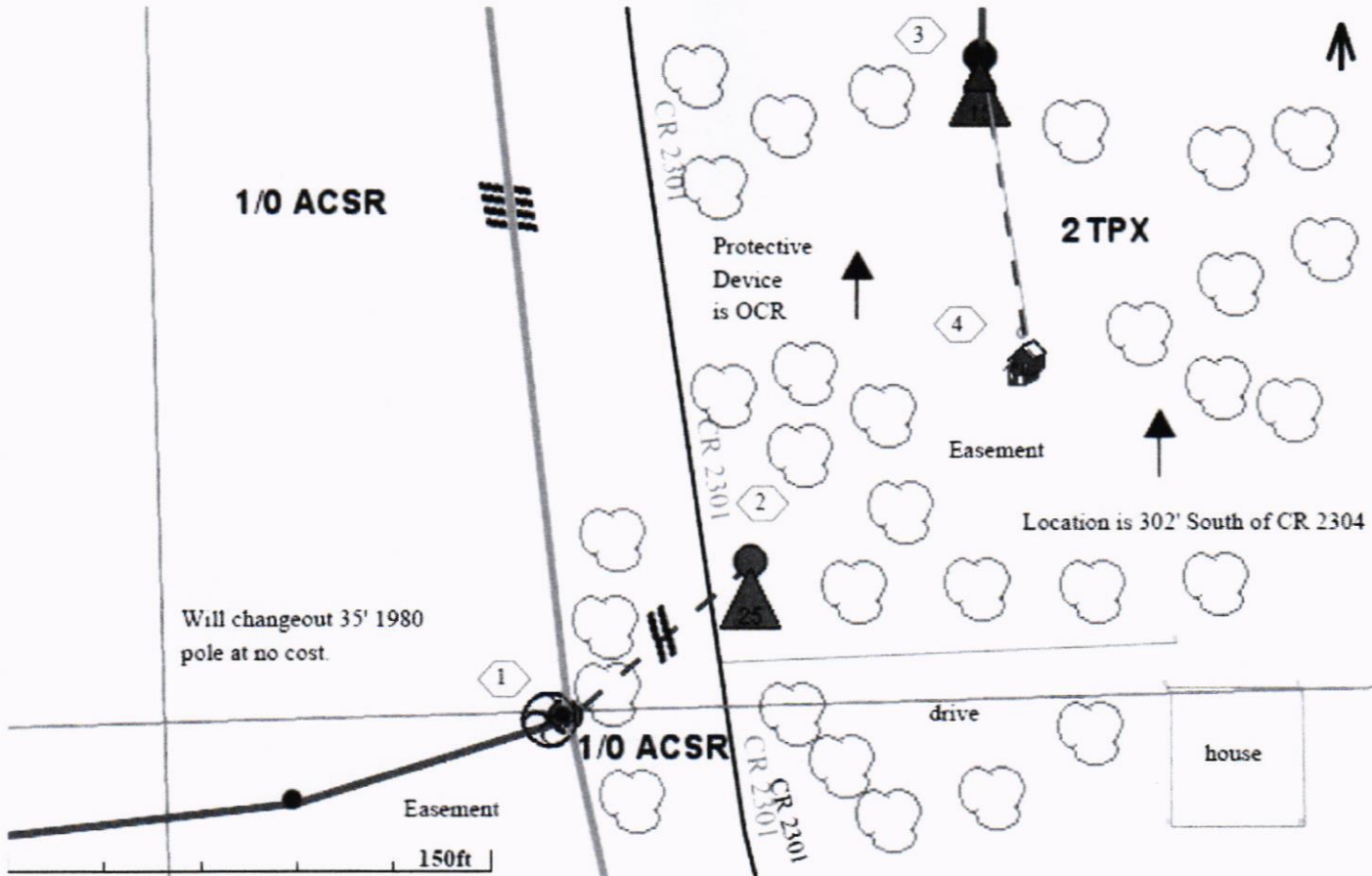
CR 2301

drive

house

Easement

150ft



County Road 2301 at pole# 075501 which is
302' South of County road 2304

803

75482

075501

ULPHUR SPRINGS ISD

MARTIN ALLAIN